



JUSTIN DOYLE
HOMES

SHAKER RUN

SERIES: SIGNATURE

3-5 BEDROOMS | 2.5-4 BATHROOMS | 2 LEVELS | 2-3 GARAGES | 2,915 SF+



CRAFTSMAN



TRADITIONAL



CLASSIC

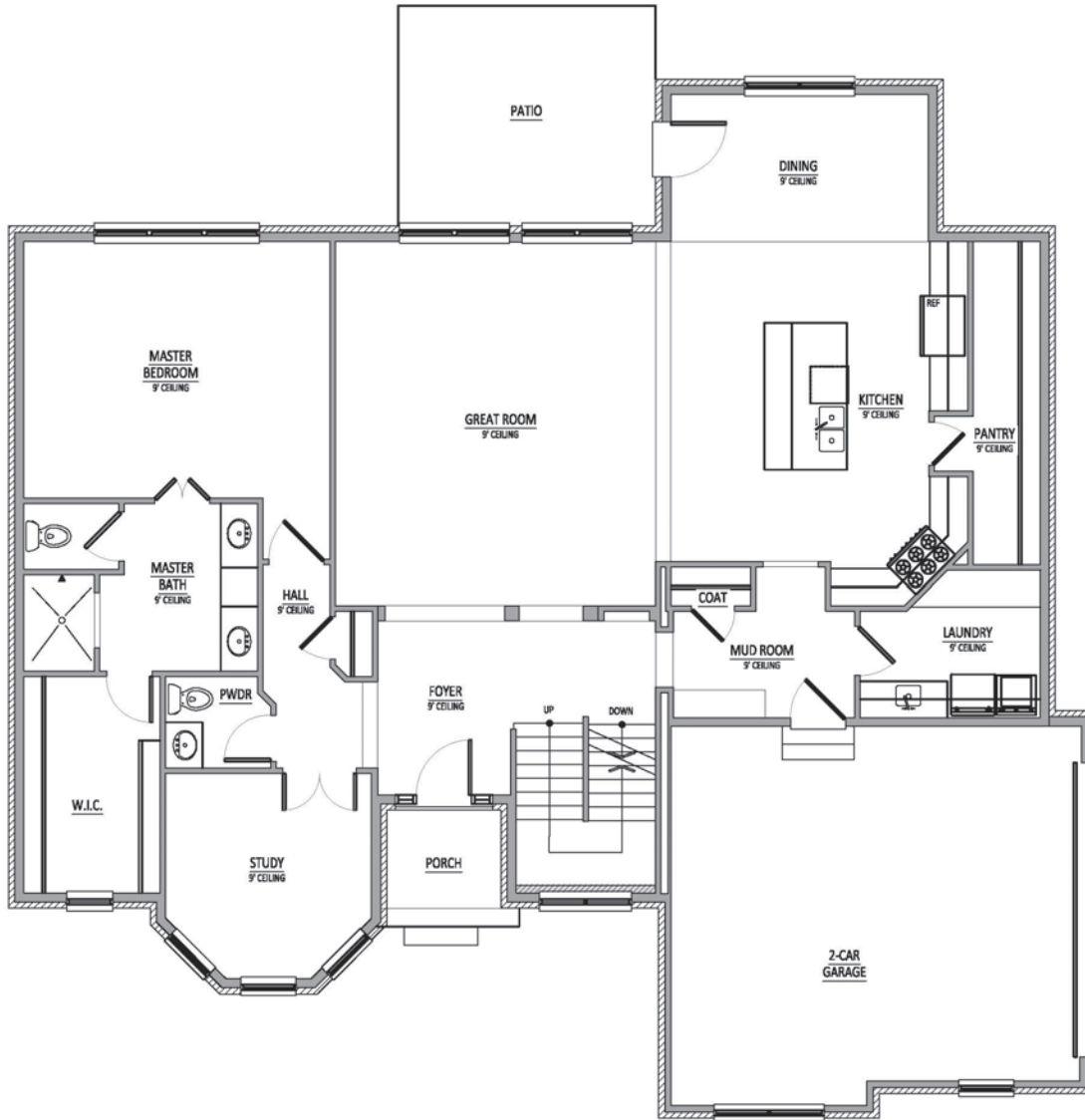
*exterior finishes may vary per style



SHAKER RUN

SERIES: SIGNATURE

3-5 BEDROOMS | 2.5-4 BATHROOMS | 2 LEVELS | 2-3 GARAGES | 2,915 SF+



FIRST FLOOR

SHAKER RUN

SERIES: SIGNATURE

3-5 BEDROOMS | 2.5-4 BATHROOMS | 2 LEVELS | 2-3 GARAGES | 2,915 SF+



SECOND FLOOR