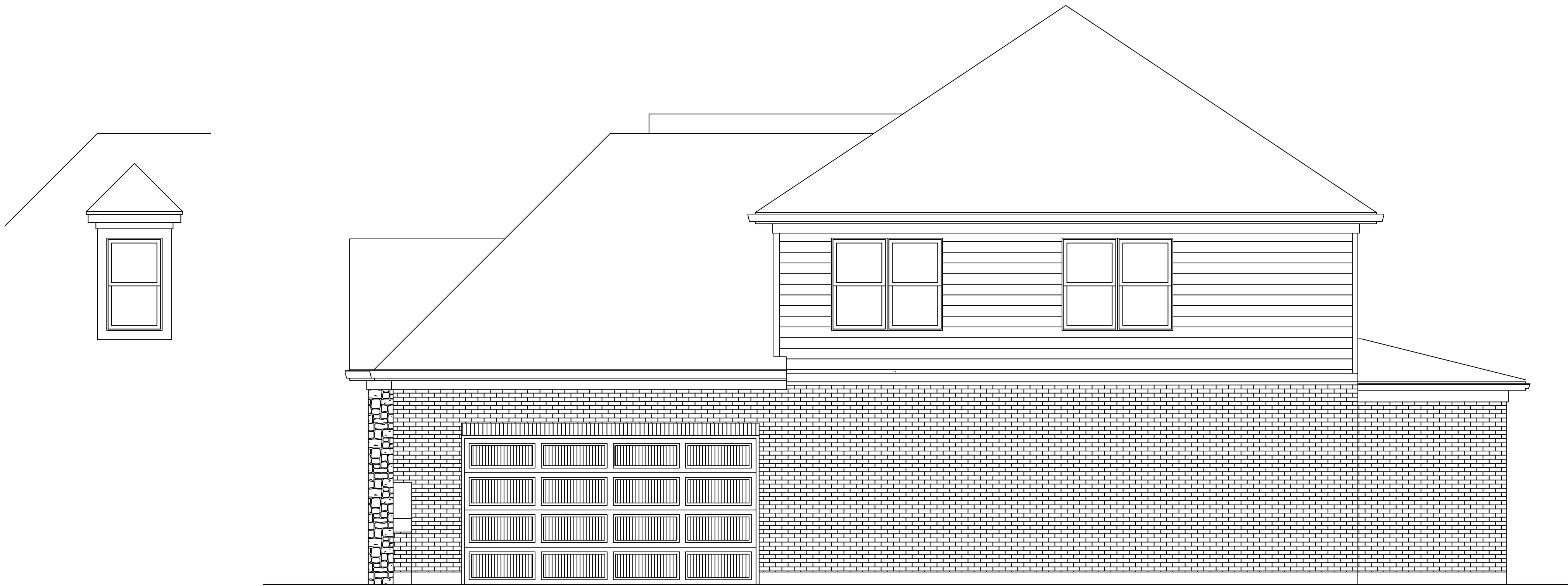
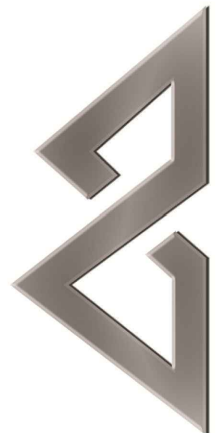


FRONT ELEVATION-TRADITIONAL  
SCALE: 1/4"=1'-0"



RIGHT ELEVATION-TRADITIONAL  
SCALE: 1/4"=1'-0"



JUSTIN DOYLE  
HOMES

New Residence for:  
CYPRESS POINTE STOCK

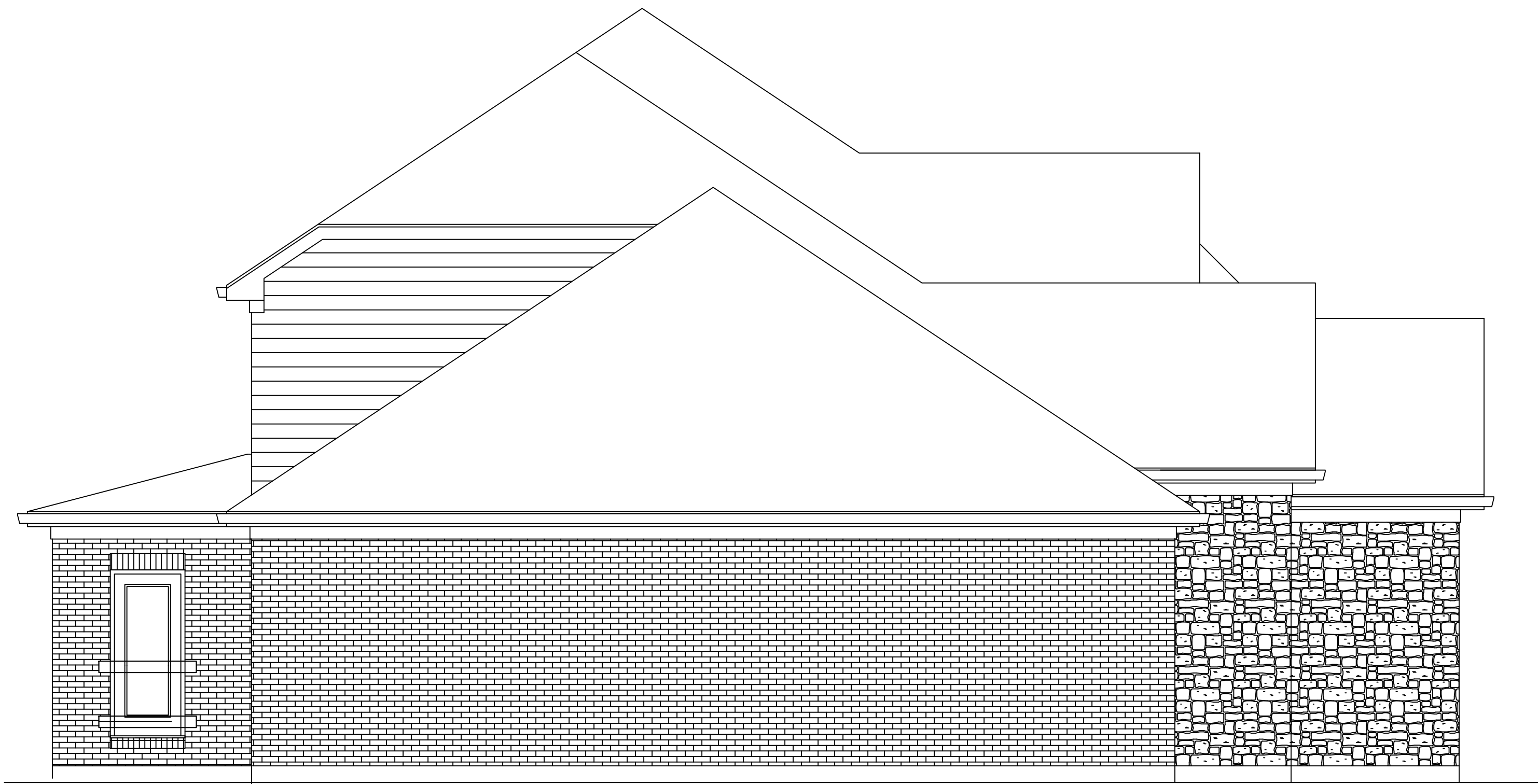
ESTIMATE  
*NOT FOR*  
CONSTRUCTION

Sheet Title	
Front & Right Elevation	
Issued	03.11.20
Scale	As Noted
Drawn By	SSR

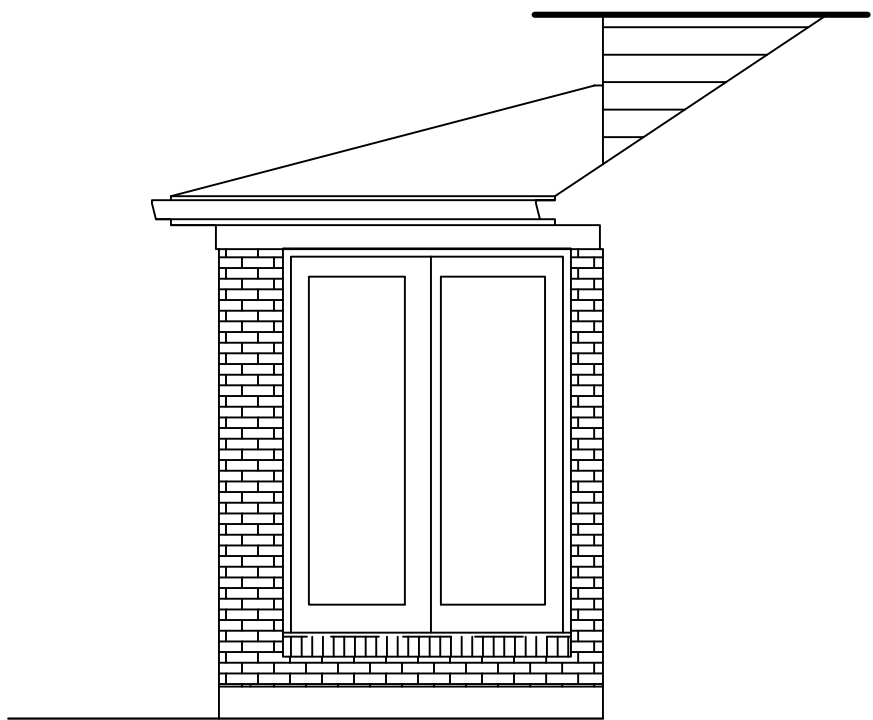
CYPRESS POINTE STOCK #

1.0

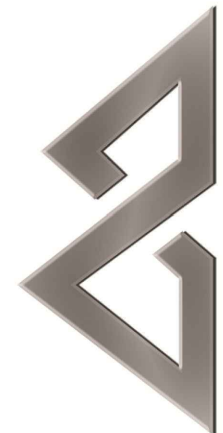
This is a proprietary design of Justin Doyle Homes. The design data and information relating thereto is not to be used, disseminated, or reproduced in whole or in part without the written consent of Justin Doyle Homes.



LEFT ELEVATION-TRADITIONAL  
SCALE: 1/4"=1'-0"



REAR ELEVATION-TRADITIONAL  
SCALE: 1/4"=1'-0"



JUSTIN DOYLE  
HOMES

New Residence for:  
CYPRESS POINTE STOCK

ESTIMATE  
*NOT FOR*  
CONSTRUCTION

Sheet Title  
Rear & Left Elevation  
Issued  
03.11.20  
Scale  
As Noted  
Drawn By  
SSR  
Checked by JDI Copyright 2016  
CYPRESS POINTE STOCK

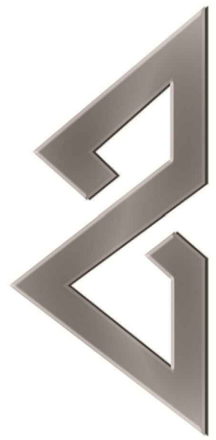
1.1



FRONT ELEVATION-CLASSIC  
SCALE: 1/4"=1'-0"



RIGHT ELEVATION - CLASSIC  
SCALE: 1/4"=1'-0"



JUSTIN DOYLE  
HOMES

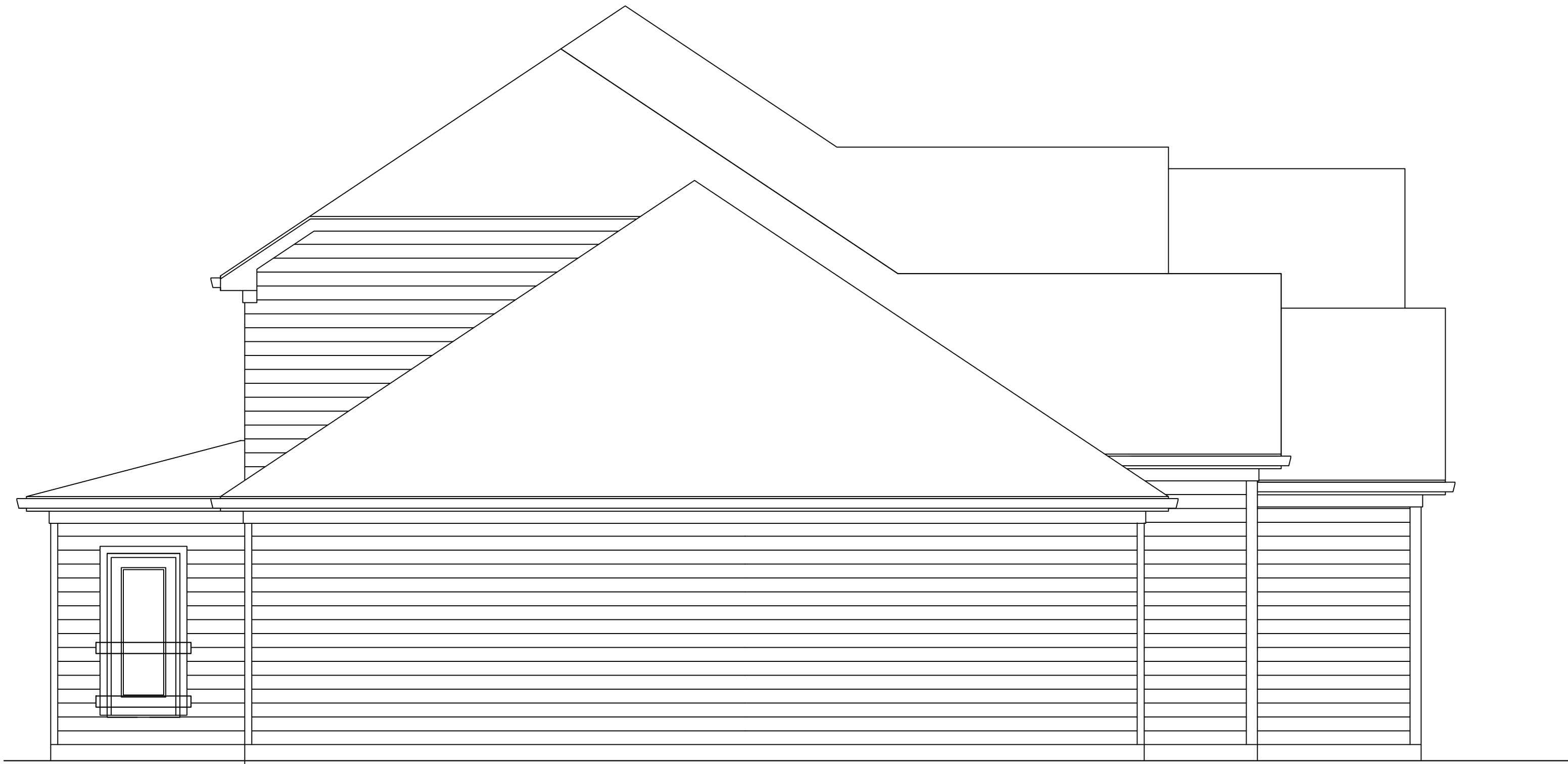
New Residence for:  
CYPRESS POINTE STOCK

Revision  
No. ESTIMATE  
**NOT FOR  
CONSTRUCTION**

Sheet Title  
Front & Right Elevations  
Issued  
02.03.20  
Scale  
As Noted  
Drawn By  
SSR  
Checked by JDI  
CYPRESS POINTE STOCK

1.2

This is a proprietary design of Justin Doyle Homes. The design data and information relating thereto is not to be used, disseminated, or reproduced in whole or in part without the written consent of Justin Doyle Homes.



LEFT ELEVATION-CLASSIC  
SCALE: 1/4"=1'-0"



REAR ELEVATION - CLASSIC  
SCALE: 1/4"=1'-0"

New Residence for:  
CYPRESS POINTE STOCK

ESTIMATE  
*NOT FOR*  
CONSTRUCTION

Sheet Title		
Rear & Left Elevations		
Revised	02.03.20	Drawn By SSR
Scale	As Noted	

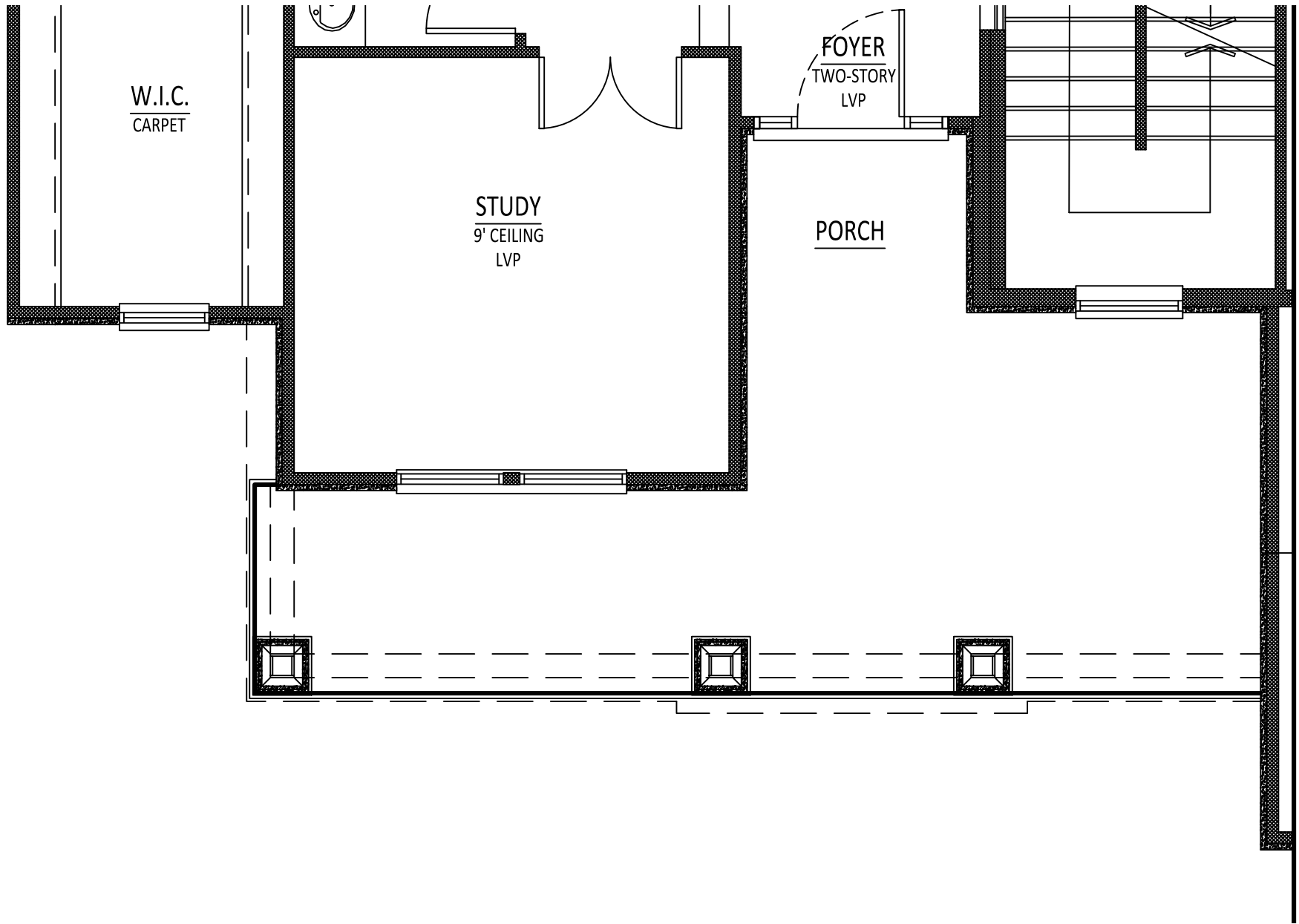
Checked by JKH Copyright 2016 CYPRESS POINTE STOCK

1.3

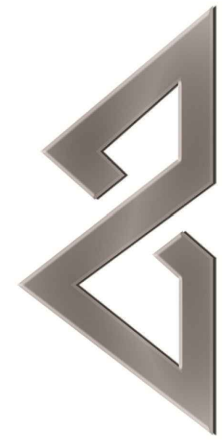




FRONT ELEVATION-CRAFTSMAN  
SCALE: 1/4"=1'-0"



RIGHT ELEVATION-CRAFTSMAN  
SCALE: 1/4"=1'-0"



JUSTIN DOYLE  
HOMES

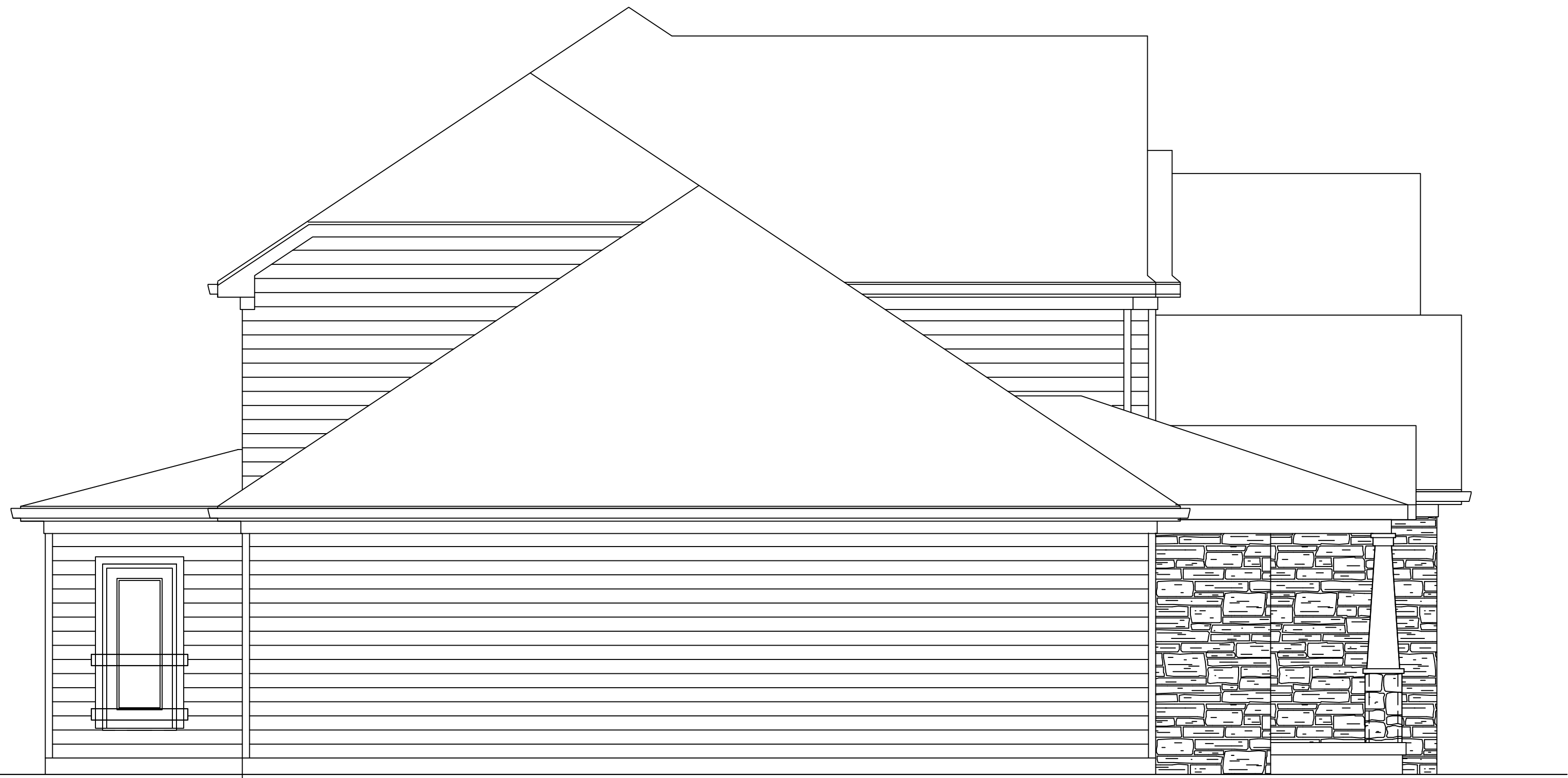
New Residence for:  
**CYPRESS POINTE STOCK**

ESTIMATE  
**NOT FOR  
CONSTRUCTION**

Revision  
No. \_\_\_\_\_  
Sheet Title  
Front & Right Elevation  
Issued  
02.03.20  
Scale  
As Noted  
Drawn By  
SSR  
Checked by JDI Copyright 2016  
CYPRESS POINTE STOCK

1.4

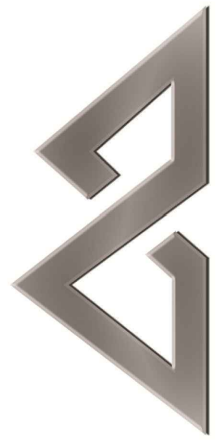
This is a proprietary design of Justin Doyle Homes. The design data and information relating thereto is not to be used, disseminated, or reproduced in whole or in part without the written consent of Justin Doyle Homes.



LEFT ELEVATION- CRAFTSMAN  
SCALE: 1/4"=1'-0"



REAR ELEVATION - CRAFTSMAN  
SCALE: 1/4"=1'-0"



JUSTIN DOYLE  
HOMES

New Residence for:  
CYPRESS POINTE STOCK

ESTIMATE  
*NOT FOR*  
CONSTRUCTION

Sheet Title	
Rear & Left Elevation	
Issued	02.03.20
Scale	As Noted
Drawn By	SSR
Checked by JDI Copyright 2016	

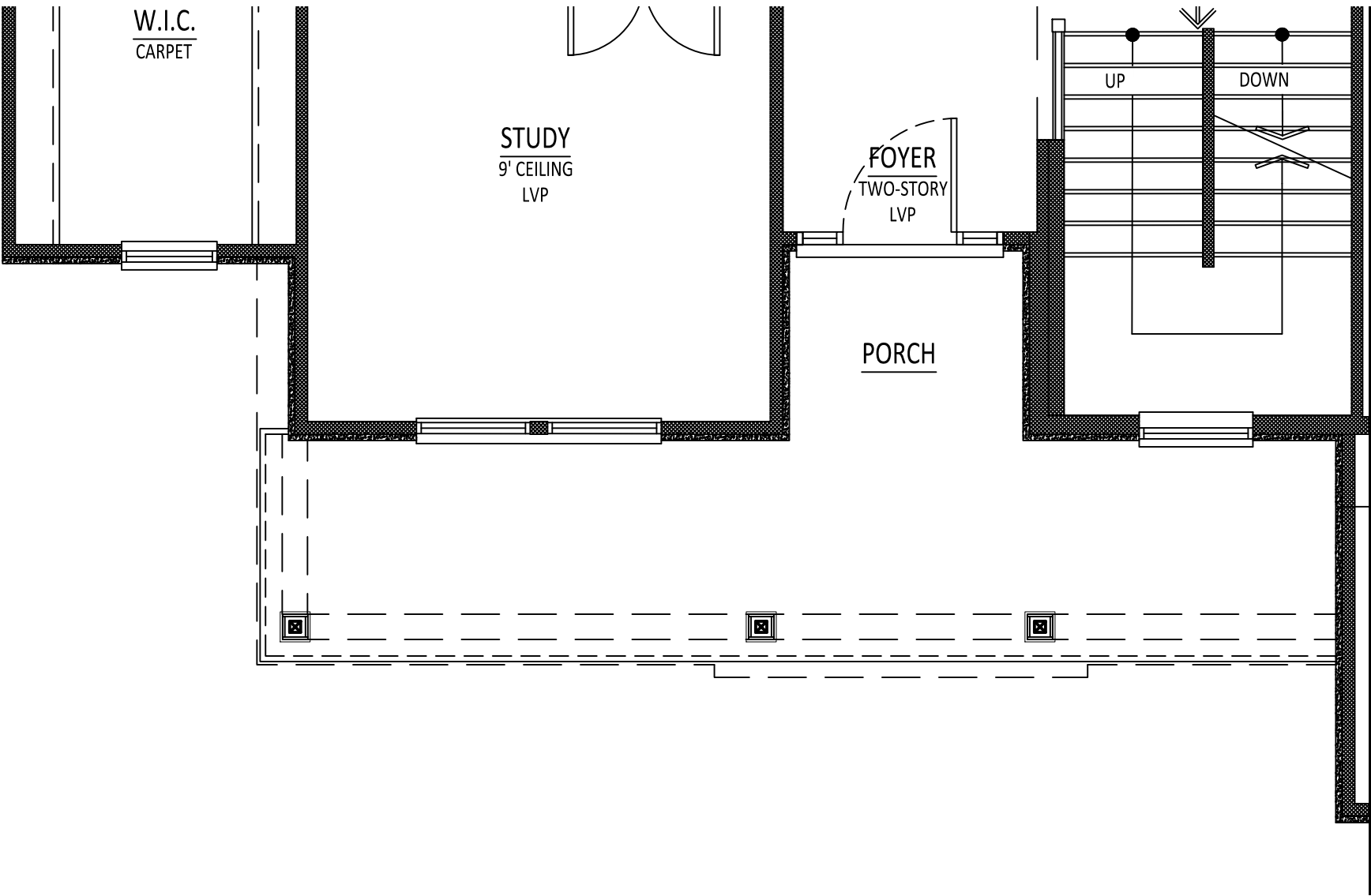
CYPRESS POINTE STOCK

1.5

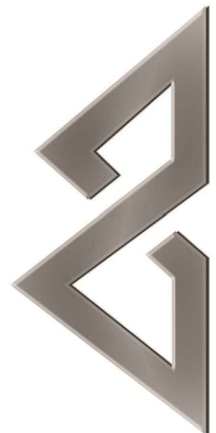
This is a proprietary design of Justin Doyle Homes. The design data and information relating thereto is not to be used, disseminated, or reproduced in whole or in part without the written consent of Justin Doyle Homes.



FRONT ELEVATION-FARMHOUSE  
SCALE: 1/4"=1'-0"



RIGHT ELEVATION - FARMHOUSE  
SCALE: 1/4"=1'-0"



JUSTIN DOYLE  
HOMES

New Residence for:  
CYPRESS POINTE STOCK

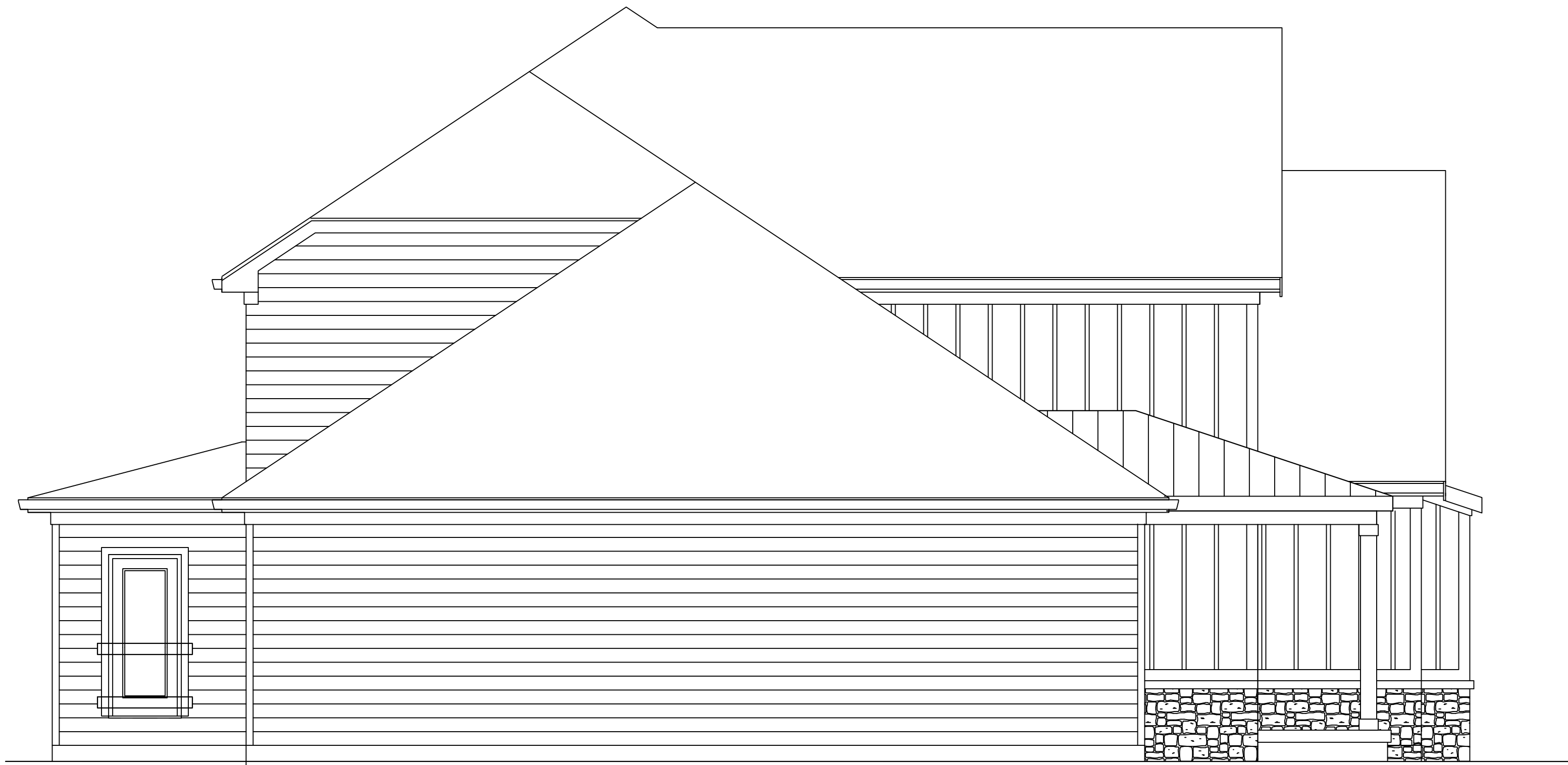
ESTIMATE  
*NOT FOR*  
CONSTRUCTION

Sheet Title	
Front & Right Elevation	
Issued	2.3.20
Scale	As Noted
Drawn By	SSR
Checked by JDI Copyright 2016	

CYPRESS POINTE STOCK

1.6

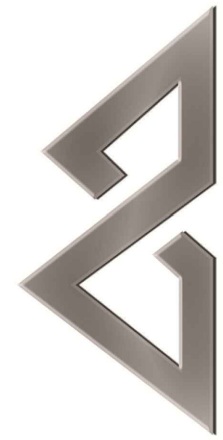
This is a proprietary design of Justin Doyle Homes. The design data and information relating thereto is not to be used, disseminated, or reproduced in whole or in part without the written consent of Justin Doyle Homes.



LEFT ELEVATION-FARMHOUSE  
SCALE: 1/4"=1'-0"



REAR ELEVATION - FARMHOUSE  
SCALE: 1/4"=1'-0"



JUSTIN DOYLE  
HOMES

New Residence for:  
CYPRESS POINTE STOCK

ESTIMATE  
*NOT FOR*  
CONSTRUCTION

Sheet Title	
Rear & Left Elevation	
Issued	2.3.20
Scale	As Noted
Drawn By	SSR
Checked by JDI Copyright 2016	
CYPRESS POINTE STOCK	

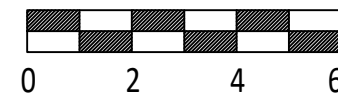
1.7





LOWER LEVEL PLAN OPTION #1

SCALE: 1/8" = 1'-0" @ 11x17  
LL FINISHED: 1,645 SF  
UNFINISHED: 201 SF

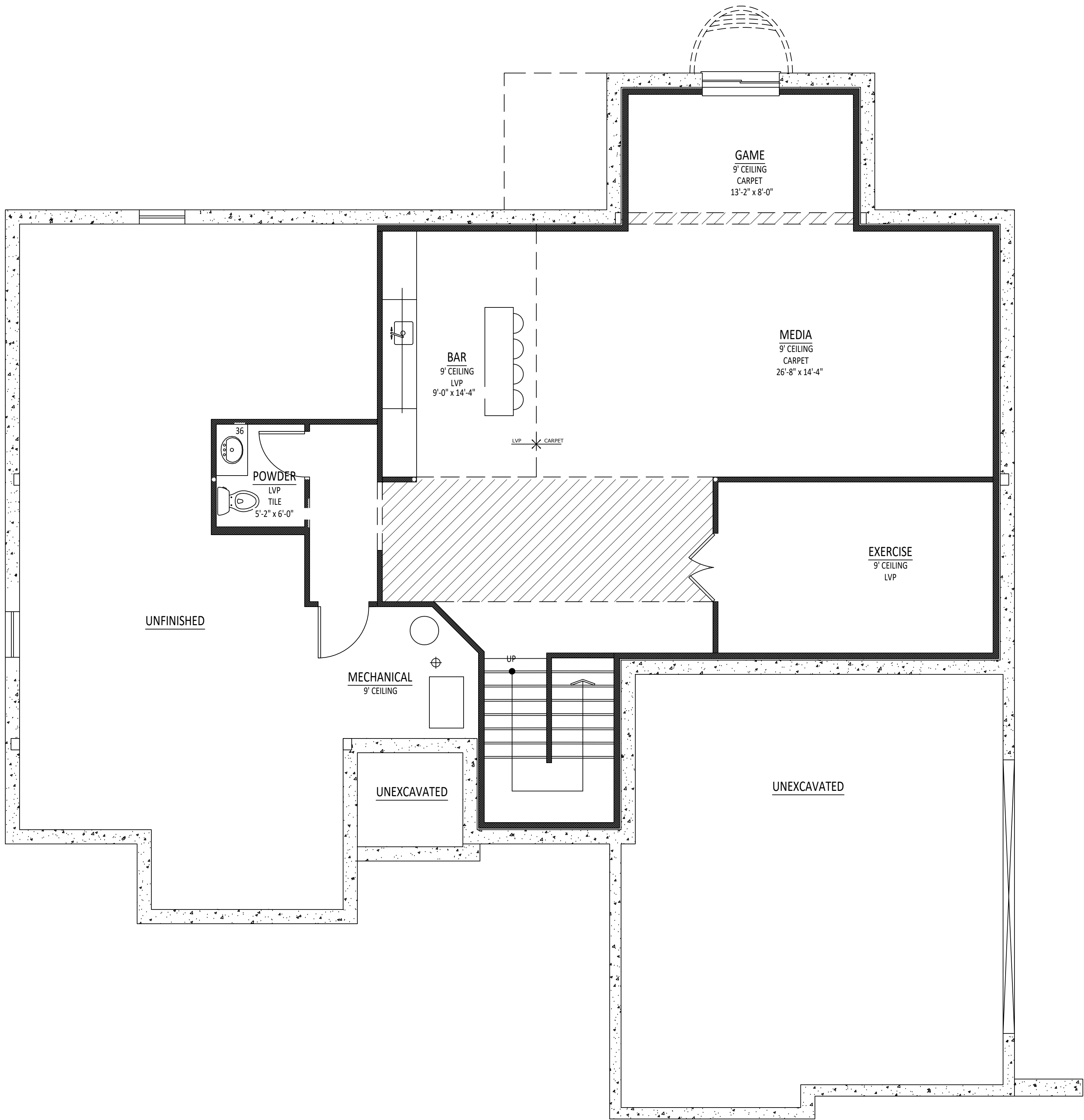


New Residence for:  
CYPRESS POINTE STOCK

ESTIMATE  
**NOT FOR  
CONSTRUCTION**

Sheet Title	
Lower Level Plan	
Issued	
02.03.20	Drawn By
As Noted	SSR
Checked by J.D.H. Copyright 2016	
CYPRESS POINTE STOCK	

2.1



LOWER LEVEL PLAN OPTION #2

SCALE: 1/8" = 1'-0" @ 11x17  
LL FINISHED: 1,105 SF  
UNFINISHED: 740 SF



New Residence for:  
CYPRESS POINTE STOCK

ESTIMATE  
**NOT FOR  
CONSTRUCTION**

Revision	No.
Sheet Title	Lower Level Plan
Issued	02.03.20
Scale	As Noted
Drawn By	SSR
Checked by	JDH Copyright 2016

2.2



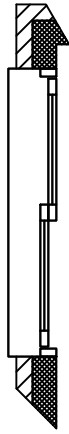
New Residence for:  
**CYPRESS POINTE STOCK**

ESTIMATE  
**NOT FOR  
CONSTRUCTION**

Revision  
No. \_\_\_\_\_  
Sheet Title  
**First Floor Plan**  
Issued  
**02.03.20**  
Scale  
**As Noted**  
Drawn By  
**SSR**  
Checked by J.D.H. Copyright 2016  
CYPRESS POINTE STOCK

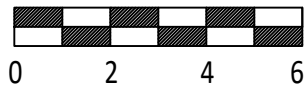
3.0





FIRST FLOOR PLAN

SCALE: 1/8" = 1'-0" @ 11x17



1ST FLR: 2,110 SF  
PORCH: 42 SF  
2-CAR GARAGE: 548 SF

New Residence for:  
CYPRESS POINTE STOCK

ESTIMATE  
**NOT FOR CONSTRUCTION**

Sheet Title  
First Floor Plan

Issued  
02.03.20

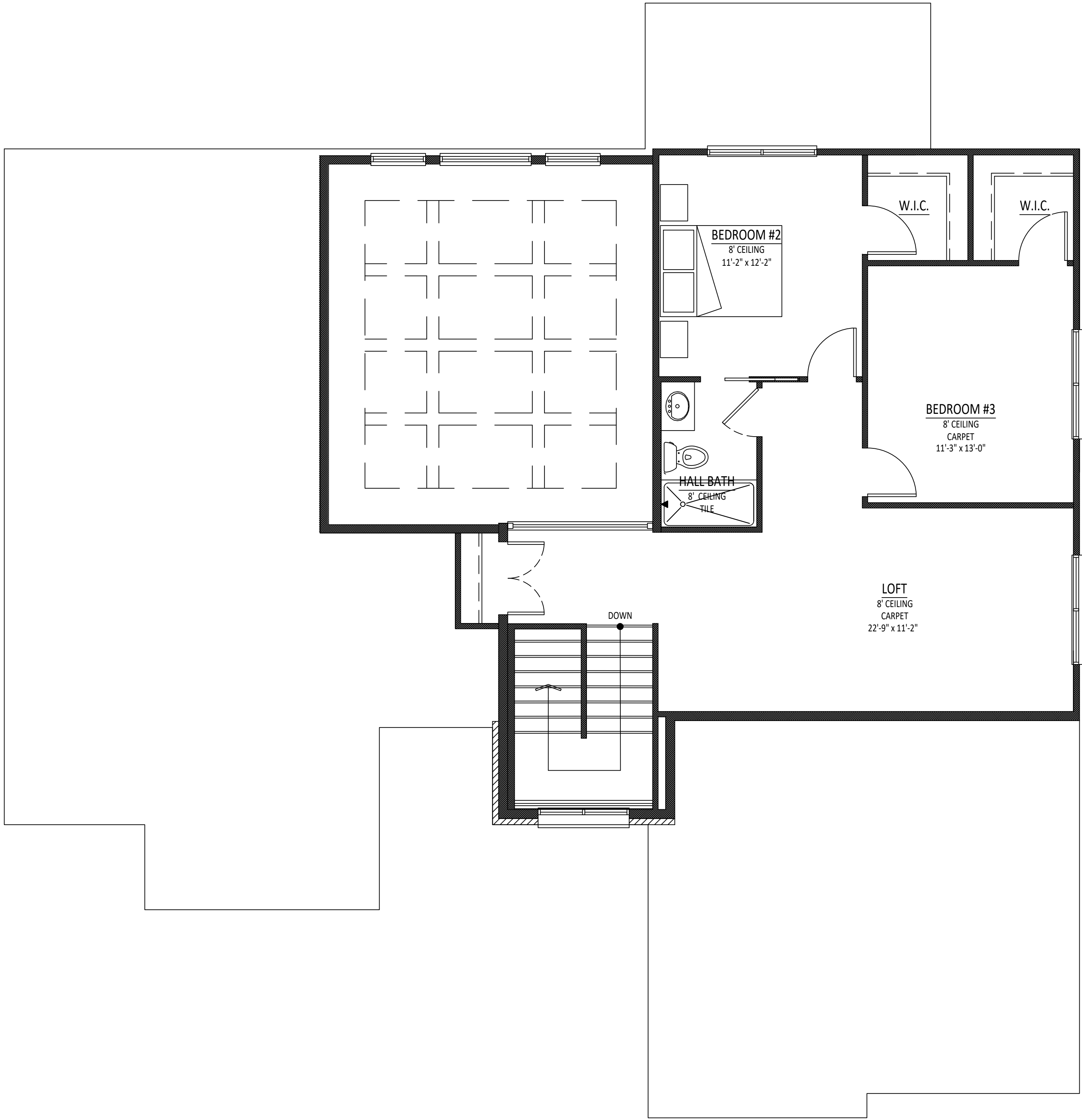
Scale  
As Noted

Drawn By  
SSR

Checked by  
CYPRESS POINTE STOCK

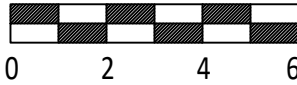
3.1





SECOND FLOOR PLAN

SCALE: 1/8" = 1'-0" @ 11x17 2ND FLR: 895 SF

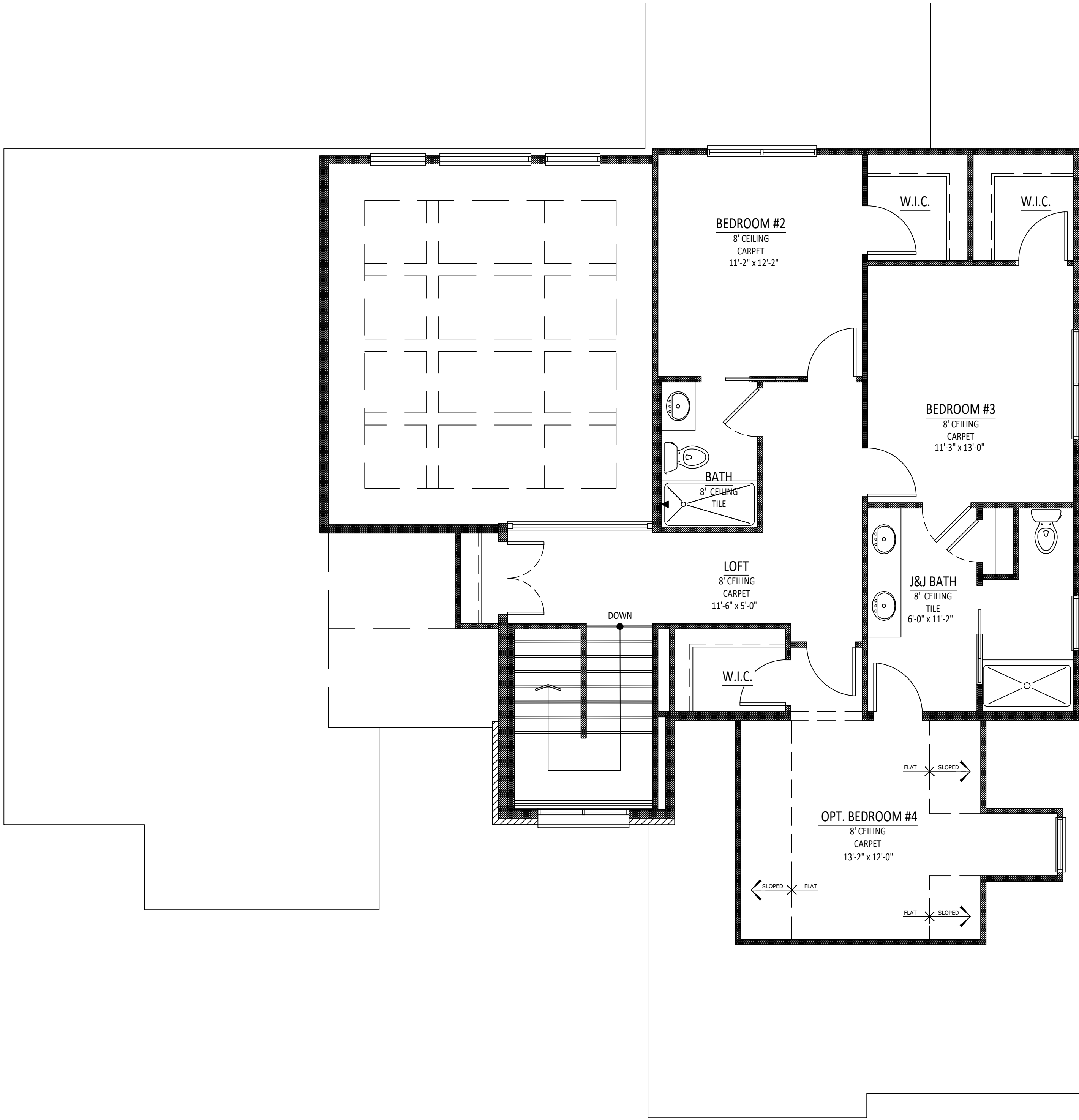


New Residence for:  
CYPRESS POINTE STOCK

ESTIMATE  
**NOT FOR  
CONSTRUCTION**

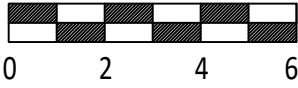
Sheet Title	
Second Floor Plan	
Issued	
02.03.20	
Scale	
As Noted	
Drawn By	
SSR	
Checked by JDI Copyright 2016	

3.2



SECOND FLOOR PLAN w/OPT. 4TH BEDROOM

SCALE: 1/8" = 1'-0" @ 11x17      2ND FLR:      1081 SF



New Residence for:

CYPRESS POINTE STOCK

Revision  
No.      ESTIMATE  
*NOT FOR CONSTRUCTION*

Sheet Title	
Second Floor Plan	
Issued	
Scale	Drawn By
As Noted	SSR
Checked by J.DH Copyright 2016	
CYPRESS POINTE STOCK	

3.3

This is a proprietary design of Justin Doyle Homes. The design data and information reciting therein is not to be used, disseminated, or reproduced in whole or in part without the written consent of Justin Doyle Homes.